

Public Facilities Evidence Paper [EPF]

Part 1: Introduction

1. This evidence paper for the Stoke Mandeville Neighbourhood Plan describes the historic development and the current provision of public facilities in the Parish¹. It discusses issues relevant to public facilities which need to be taken into account in the Plan.
2. In this paper, the term 'Public Facilities' means those facilities provided by local and national government, and technological connectivity.

Executive Summary

3. The Parish of Stoke Mandeville has a divided nature when it comes to access to public facilities. The village neighbourhood has some – but an inadequate level of - public facilities, whereas Stoke Grange and Stoke Leys have virtually no public facilities at all and Hawkslade (the largest neighbourhood in the Parish) only has a Community Centre and a recently built young children's Playground.
4. The evidence indicates that the Neighbourhood Plan should address the following issues:
 - a. The cohesion of the community as a whole should be addressed. The physical separation of the Parish neighbourhoods is exacerbated by a lack of facilities in common.
 - b. Every child living in the Parish should have access to appropriate education, at least up to secondary level within the Parish. Currently, both Schools in the Parish are operating either, almost at or beyond optimum capacity.
 - c. There should be some provision of medical facilities within the Parish to aid the aim stated by the local CCG (Clinical Commissioning Group) of increased community based care.
 - d. Whilst allotment facilities are adequate for current residents, allotment provision should be included in future developments.

¹ References in this paper to 'Parish' mean the civil Parish of Stoke Mandeville, not the parochial Parish associated with the Anglican Church.

Part 2: Facts

Historical Background & Development

5. As explained in the Settlement Development Evidence Paper, Stoke Mandeville Parish is primarily a post-WW2 suburban area which has absorbed a small Victorian nucleated village from which it takes its name. The Parish consists of four distinct neighbourhoods, to which strategic development will soon add a fifth and sixth. For the early history of Stoke Mandeville, please see the 'History of Stoke Mandeville' Evidence Paper.
6. The Parish has seen continuous and recently massive growth in housing numbers but no recent proportionate development of public facilities, especially in the three northern neighbourhoods of Stoke Leys, Hawkslade and Stoke Grange. It appears that planners for these three large areas within the Parish regarded them as adequately served by the public facilities of the wider Aylesbury area. This attitude has led to historic under-provision of public facilities in these areas, especially compared to the village neighbourhood.

Existing Facilities

7. Currently the Parish has the following public facilities.

Education

8. The Parish includes two Schools:
 - a. Stoke Mandeville Combined School, a single-entry combined School catering for children between the ages of 4 and 11. The pupil roll is currently 194 individuals with School capacity reported at 210. The School's latest Ofsted rating is "Good" (January 2018). The percentage of children eligible for free School meals is 5.7%.² This School is located in the village neighbourhood.
 - b. Booker Park is a large primary SEND (Special Educational Needs and Disability) School of 220 pupils capacity, currently having 237 pupils on the roll, for children between the ages of 3 - 11, with a broad diversity of complex needs including profound and multiple, severe and moderate learning difficulties. Almost half of the pupils have an additional diagnosis of an autistic spectrum condition.³
9. The School's latest Ofsted rating is "Requires Improvement" (November 2018). This School is located in the Stoke Leys neighbourhood.
10. Each School in its own way seems faced with typical capacity issues across the primary education sector.
11. On its web site, the Combined School advertises itself as operating at 92% of capacity, thus being under slightly less pressure in numbers. However, 3% to reach optimum capacity, as suggested by DfE (see guidance following) represents only 6 further pupils. There are already (December 2019) 454 new homes under development in the Parish plus almost 1500 more allocated for development over the next 10 or so years.

² Data from School web site <https://stokemandeville.eschools.co.uk/web>

³ Data from School website <https://www.bookerpark.com/>

12. "It is generally accepted that Schools should not operate at 100% of their capacity, and a small surplus in places does not necessarily equate to there being sufficient capacity within Schools. The Audit Commission recommends that local authorities should plan for a 95% occupancy rate in Schools to allow for volatility in preferences from one year to the next (e.g. year on year changes in the birth rate). BCC is meeting this requirement in most areas. If surplus capacity falls below the 5% threshold of sustainability described above, a developer contribution towards provision of School places will be required." ⁴

13. This guidance fits with the national pattern when "nationally, in May 2012, there was a surplus of 10 per cent of primary places. However, 13 per cent of local authorities (19) had Primary School surplus places of less than *the Department's (DfE) planning assumption of a minimum of 5 per cent.*" ⁵

14. Some spare capacity is needed to allow parents to exercise choice. Nationally, there are a considerable number of spare places:
Primary Schools: Although pupil numbers have risen, spare capacity fell by only one percentage point to 10% between 2010 and 2015. All but three local authorities had more than 5% spare capacity in 2015." ⁶

15. It appears that the basis for local comparison to national standards may not always be reliable since "Figures for School capacity used in calculations are based on the most recent available data but are not accurate in all cases. For example, local authorities do not have automatic access to up-to-date data on capacity for Academies (which educate an increasing proportion of pupils). In addition, the Department has to estimate the split between pre-16 and sixth form capacity in Secondary Schools."⁷

16. All capacity considerations are challenged when the growth of primary numbers based on the number of planned new homes in the Parish is taken into account. According to Buckinghamshire Council standard capacity planning model, (for every 100 new homes there will be, on average across age ranges, 30.4 new primary age children requiring School places⁸) there will be some 600 additional children of Primary School age requiring places across some 2,000 new homes planned in the Parish over the next 10 years or so.

17. Of the 2,000 planned homes, some 500 are already under development with potentially, therefore, some 150 places likely to be needed in the shorter term.

⁴ Buckinghamshire CC "Guidance on Planning Obligations for Education Provision - Education section 106 Policy, Effective 8 June 2010" updated 12 March 2019, para 7.4

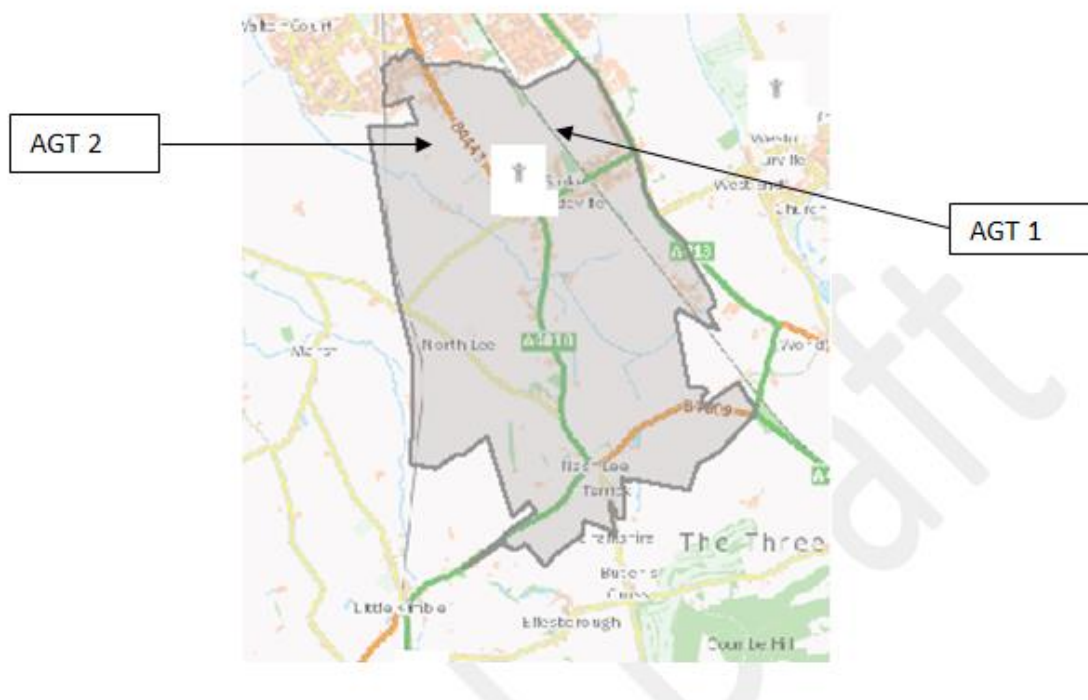
⁵National Audit office "Capital funding for new School places" March 2013, para 1.18

⁶ National Audit Office "Capital funding for Schools" 21 February 2017, para-1.8

⁷ National Audit Office "Capital funding for Schools" 21 February 2017, para-1.19, second bullet

⁸ Buckinghamshire CC "Guidance on Planning Obligations for Education Provision - Education section 106 Policy, Effective 8 June 2010" updated 12 March 2019, Table 1, para 8.3 page 12

18. Significant parts of the proposed development sites for these homes, designated in AVDC's VALP Modifications version of their draft local plan as AGT1 and AGT2,⁹ fall within the catchment area of the Combined School as illustrated in the catchment area map below.



Stoke Mandeville Combined School catchment area - includes the village and Stoke Leys but excludes Hawkslade and Stoke Grange¹⁰.

19. The undeveloped area to the west of the B4443, Lower Road and then between that road and the A413, Wendover Road to the north of the village is the area designated as AGT1 and AGT2, clearly within the School catchment area.
20. As far as capacity at Booker Park is concerned, the situation of 17 pupils in excess of reported capacity appears to fit into the national pattern when we read "In our survey, 79% of local authorities said that the availability of funding for pupils with special educational needs was a major constraint on delivering sufficient places. This is because the cost of a place in a special School, while highly variable, is on average four times the cost of a mainstream primary place. There is a range of potential consequences if there are insufficient special School places. For example, pupils may have to travel further or may be inappropriately placed in mainstream Schools."¹¹

⁹ VALP Main Modifications submission October 2019, p377/404
https://www.aylesburyvaldc.gov.uk/sites/default/files/page_downloads/MASTER%20main%20mods%20VALP%20final_1.pdf

¹⁰ Catchment area map at <https://services.buckscc.gov.uk/school-admissions/nearest/30%2520Brudenell%2520Drive%252C%2520Stoke%2520Mandeville%252C%2520Buckinghamshire%252C%2520HP22%2520UR%253B-0%252E789803310386768%253B51%252E7858943916094%253BJunior?view=map>

¹¹ National Audit Office "Capital funding for Schools" 21 February 2017, para-1.22

21. The planned growth in the VALP of several thousand new homes within the Vale of Aylesbury of Buckinghamshire to 2033 is likely to also increase the pressure on capacity at the already over capacity Booker Park School, as the numbers on the School's website demonstrate, though the VALP identifies where and how School capacity will need to be increased. The proportion of Bucks primary and secondary pupils who attend a special School is 1% and 2.4% respectively,¹² therefore to determine the number of special School pupils generated from a site, it is necessary to apply these percentages to the mainstream pupil estimates. The pupil yield figures for mainstream Schools are accordingly reduced by the same percentage. This suggests that a local development of up to 2000 homes could yield a need for up to 6 places in a special needs Primary School which is already operating at a level in excess of capacity.

Health

22. Currently, there are no Hospitals, Dentists, Doctors Surgeries, Pharmacies or other commonly required medical services provided in the entire Parish, although Stoke Mandeville General Hospital is on the edge of the Parish. Residents' primary health care needs are met by medical services in adjacent neighbourhoods or in Aylesbury and Wendover. This despite one of the six goals of the recently published CCG strategy for primary care in Buckinghamshire being:

Our Goal: Health, social care and voluntary sector providers working together to offer community based, person-centred, co-ordinated care which proactively manages long term conditions, older people and end of life care out of the Hospital setting.¹³

23. The civil Parish of Stoke Mandeville falls largely within the formal catchment area of the Westongrove¹⁴ Partnership, served through either the Bedgrove or Wendover Surgeries. The exception is Hawkslade, which falls within the catchment of the Mandeville Practice¹⁵ except for Oat Close and Harvest Close (new development) which fall within the Whitehill Surgery¹⁶ catchment area. Additionally, a number of residents of the Parish have historically joined, and are still served by, other Surgeries, e.g. Poplar Grove.
24. The outcome of the scope of the catchment areas is that with the exception of a small part of Stoke Grange near to Wendover Road (A413) for a patient in any of the areas of Stoke Mandeville Parish to visit their doctor will require a journey using car or public transport.
25. This consequence is despite the "vision" for "tier three plus care" being about services being available in the community, the catchment area splits emphasise the divided nature of the Parish rather than helping to create a unified community feeling which the vision professes to envisage:
- "In moving care out-of-Hospital and closer to home, an additional "Tier Three Plus" is created, with services that were historically provided in Hospital now being available in the community, led by local health care teams with access to specialist advice as required."¹⁷

¹² Buckinghamshire CC "Guidance on Planning Obligations for Education Provision - Education section 106 Policy, Effective 8 June 2010" updated 12 March 2019, para 7.9

¹³ "Primary care in Buckinghamshire. Our Strategy for proactive, co-ordinated out of hospital care." 2017, p16.

¹⁴ <https://www.primarycare.nhs.uk/publicfn/catchment.aspx?oc=K82073&h=400&w=600&if=0>

¹⁵ <https://www.mandevillesurgery.co.uk/join-the-practice>

¹⁶ <https://www.whitehillsurgery.nhs.uk/page1.aspx?p=4&t=3>

¹⁷ "Primary care in Buckinghamshire. Our Strategy for proactive, co-ordinated out of hospital care." 2017 "Our Vision" p12

26. Annex 5 shows GP practices local to Stoke Mandeville and their total patient rolls, together with their GP to patient ratio, which can be compared to the national GP to patient ratio of 1,729 patients per GP.

Places of Worship

27. The Parish has two Churches within its boundaries:
- The Church of St Mary the Virgin, the Parish Church (Church of England,) and its associated Church Hall and office, The Ark on Risborough Road, are both located in the village. As well as supporting the Christian community from a wide area in and around the civil Parish through its regular Church services, St Mary's also hosts regular services of the Romanian Orthodox Church community of Aylesbury and High Wycombe. The Church has a Churchyard, closed for further burials, which accepts ashes of those with local connections for burial following cremation.
 - Stoke Mandeville Methodist Church and Hall on Eskdale Road in the village holds services at 11:00am on Sunday mornings.
 - In addition, the Community Centre in Hawkslade hosts the Hawkslade Community Church on Sunday mornings.
 - Although there are no places of worship for those within the Parish declaring affiliation to religions other than Christianity, the census of 2011 suggests that there is less than 5% of the Parish population of affiliation to religions other than Christianity as illustrated below:

Religious Affiliation (Census 2011)¹⁸		
Religion	Number of People	%
Christian	3,630	66.9%
Muslim	78	1.4%
Hindu	56	1.0%
Sikh	16	0.3%
Jewish	9	0.2%
Buddhist	21	0.4%
Other religion	15	0.3%
No religion	1,605	29.6%
Total	5,430	

¹⁸ Figures extracted from census 2011 by City Population - www.citypopulation.de

Burial Grounds

28. There are currently two burial grounds in the Parish:
 - a. The Churchyard of St Mary the Virgin has been closed to burials since 1999.¹⁹
 - b. The burial ground owned by the Parish Council is located in Swallow Lane in the village, adjacent to the closed Churchyard of St Mary's Church. This burial ground has fewer than 10 plots available and will probably also be closed in the very near future.
29. Given the existing and planned development in the Parish, the need for a new burial ground is now urgent. The Parish Council has applied for planning permission to use their land in Marsh Lane as a future burial ground of some 800 plots. There are over 450 dwellings currently being built in the Parish. There are proposals for up to a further 1500 or so dwellings to be built over the coming 10 or so years.²⁰ These properties are likely to be occupied by people of all age ranges. Currently there are 85 residents aged 65 or over²¹ in the local Fremantle Trust Residential Care and Nursing Home on the edge of the Parish.
30. The age range of the Parish population based on the census of 2011 is shown in Annex 8.
31. The age range of existing residents of the Parish is the foundation on which the new layer of population for new developments will rest.

Allotments

32. The Parish Council owns a parcel of land behind the Combined School in the village, which has been used as a series of allotments for many years. The land extends between Lower Road and Marsh Lane (northwest of SM Combined School) with an approximate area of 10,000m² (1 hectare.) Section 106 funds have recently been used to improve the allotment car park.

The current number of allotments, the annual rental and the current availability of allotments is as follows.²²

 - Number of allotments: 29 half plots and 21 full plots; 35½ plots in total.
 - Annual rental: Current annual rent is £30 for a full plot and £15 for a half plot.
 - Current availability (October 2019) - All allotments are taken.²³
33. The DCLG has recently reviewed the need for allotments in the village in the context of releasing land designated as allotment land for disposal. The land in question is a plot facing onto Marsh Lane, adjacent to the existing allotments, which the Parish Council has long held as unused allotment land. The case the DCLG made for allowing the disposal of allotment land is laid out in their letter a copy of which is in Annex 7.

¹⁹ See Closure notice in Annex 6

²⁰ See revised VALP

²¹ CQC report October 2019 <https://www.cqc.org.uk/location/1-1314621527/inspection-summary#overall>

²² Information from reply to query raised with Stoke Mandeville Parish Council 31 October 2019

²³ See confirmation email from Parish Council at Annex 4

Broadband

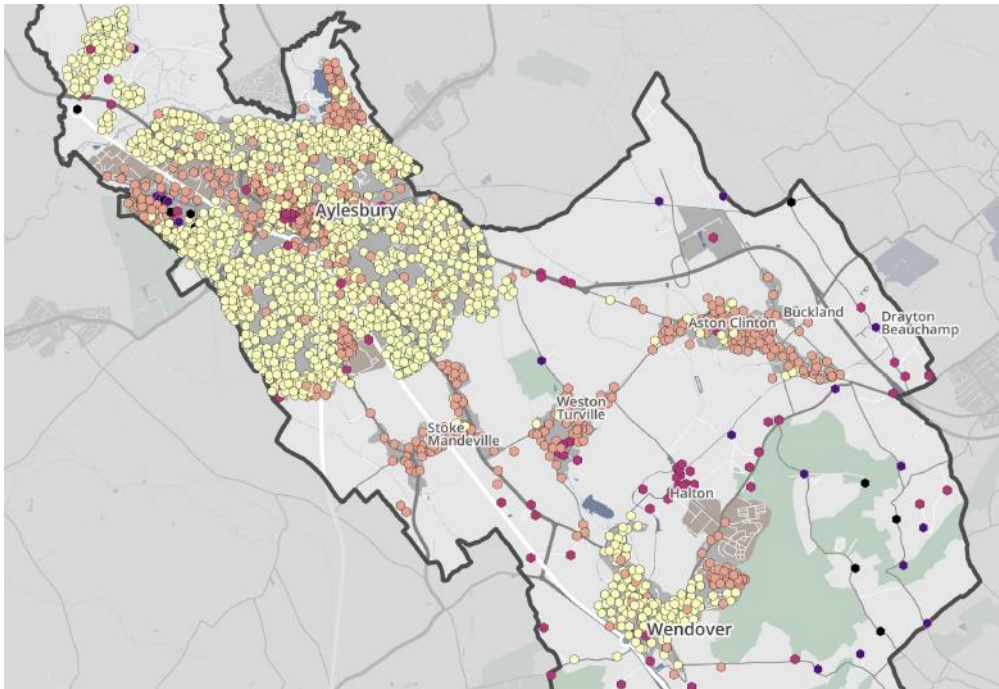
34. Broadband and internet connectivity are essential to modern daily life and to businesses. It is for this reason that this evidence paper regards broadband as a public facility.
35. Broadband coverage for the Parish of Stoke Mandeville comes principally from the Aylesbury exchange in the town centre for the neighbourhoods of Stoke Grange, Stoke Leys and Hawkslade with the Stoke Mandeville exchange covering the village. The exchanges concerned are located at:
 - a. Stone automatic telephone exchange (SMSE) Portway Road, Hartwell, near The Bugle Horn.
 - b. Stoke Mandeville automatic telephone exchange (SMSMV) Station Road, Stoke Mandeville village, opposite Plested Court.
 - c. Aylesbury telephone exchange (SMAY) Alexander Road/New Street, (A418) Town Centre.
36. A range of broadband providers is available from each exchange although Virgin fibre is available only from the Aylesbury exchange. As a result, the fastest download speeds noted from test results are generally in the northern neighbourhoods of the Parish served by the Aylesbury exchange.²⁴ Of course, speed test results not only reflect the access to super/ultra-fast broadband speeds but are also affected by distance from exchange, type of subscriber package, traffic on the line when tested and other factors. Annex 1 shows specific speed tests from individual subscribers on 16 August 2017 at 16:30. Annex 1A shows typical Broadband download speeds (mbps) based on tests by subscribers.²⁵
37. Statistics show that Aylesbury parliamentary constituency area has 95.8% coverage for superfast broadband, including across Stoke Mandeville Parish²⁶, although the same source shows widely varying speeds.²⁷ The broadband map of Aylesbury constituency on the following page shows that where Virgin fibre broadband is available (lightest colours), the Parish is served as well as any of the neighbourhoods.
38. Similarly, in the village where fibre broadband is not available, the quality of broadband connection is as good as any other neighbourhood that has no fibre broadband.
39. The map of the quality of connectivity in this area has the fastest speeds (fibre) in lighter colours and shading into darker colours as connectivity quality reduces.

²⁴ <http://labs.thinkbroadband.com/local/?postcode=HP22%205UR>

²⁵ <http://maps.thinkbroadband.com>

²⁶ <http://data.parliament.uk/resources/constituencystatistics/broadbandmaps/2019/connectivity/Aylesbury-connectivity.pdf>

²⁷ <http://data.parliament.uk/resources/constituencystatistics/broadbandmaps/2019/speed/Aylesbury-speed.pdf>



Aylesbury constituency - Broadband connectivity (Extract)²⁸

Superfast availability in Aylesbury is higher than the UK average and higher than the average for the South East.²⁹

Telephone and Telecoms

40. Mobile phone coverage in the Parish is provided by all four of the major national providers.³⁰ Signal strength in Stoke Mandeville Parish areas (where data is collected) indicates the following:
- a. Vodafone - generally acceptable though weak signal in Stoke Leys.
 - b. O2 - generally acceptable but weak signal in Station Road.
 - c. EE - good signal widespread though weak signal in the area of the busy road junction between Station Road and Wendover Road.
 - d. Three - generally weak signal coverage.

Annex 1 shows the source of network coverage and the location of network masts in the Parish.

²⁸ <http://data.parliament.uk/resources/constituencystatistics/broadbandmaps/2019/connectivity/Aylesbury-connectivity.pdf>

²⁹ <https://commonslibrary.parliament.uk/science/technology/constituency-data-broadband-coverage-and-speeds/>

³⁰ <http://www.which.co.uk/reviews/mobile-phone-providers/article/mobile-phone-coverage-map>

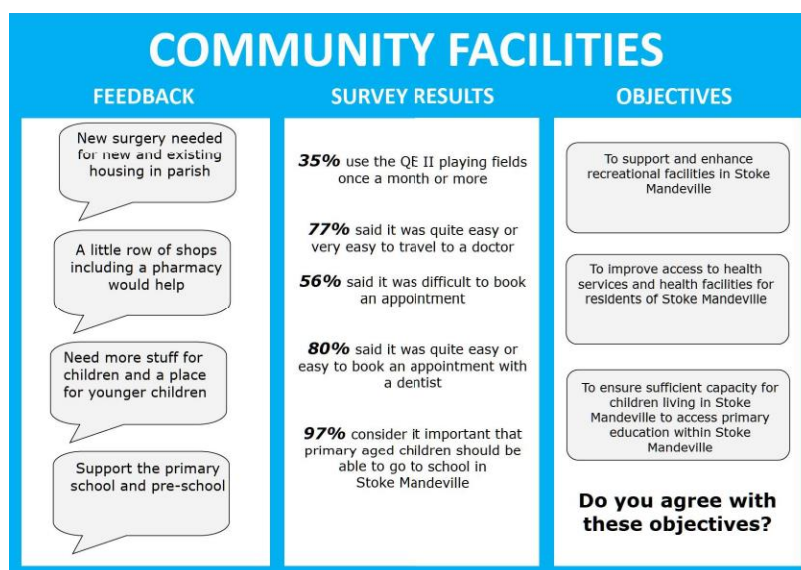
41. To assess the above data against the national picture, Ofcom produce an annual review. These are the key findings in the report for 2018:³¹
- Superfast broadband coverage has increased to 94% of homes and businesses, up from 91% last year. This refers to the availability of fixed broadband services with a download speed of at least 30 Mbit/s.
 - Almost 1.8 million homes and businesses (6%) now have access to full-fibre connections (compared to 840,000 last year). These connections can deliver much higher download speeds, of up to 1 Gbit/s.
 - 91% of the UK's landmass has access to good 4G mobile coverage from at least one operator, while 66% has coverage from all four mobile network operators. Within this, individual operator coverage varies, with the highest being 84% and the lowest 74%. Despite this progress, there are still large parts of the UK that are poorly served by communications services.
 - Around 2% of UK premises cannot access a decent fixed broadband service that delivers a download speed of at least 10 Mbit/s and upload speed of at least 1 Mbit/s. However, this has improved from 4% last year.
 - While 94% of UK homes and businesses are in areas where superfast, or better, broadband is available, only 45% of homes are subscribing to these services.
 - 9% of UK landmass has no good 4G coverage from any operator. This has improved from 21% a year ago but rural areas are still badly affected.
 - 23% of homes and businesses do not have good indoor 4G coverage from all operators.
 - We also estimate that there are 39,000 homes and businesses that cannot access a decent fixed broadband service or get good 4G coverage.

Public Opinion About Public Facilities

2017 Consultation

Public Consultation 2017 & 2018

42. A Public Consultation Exhibition was held in November 2017 and September 2018 by the Stoke Mandeville Neighbourhood Steering Group which included the display board below.



³¹ Ofcom Connected Nations 2018 UK report

43. In November 2017 the Stoke Mandeville Neighbourhood Plan Steering Group sought public views about the current quality of public facilities as summarised in the objectives. These objectives and the responses to them are summarised below.

The issue of recreational facilities is dealt with in a further paper covering "Community Facilities."

Objective	Responses
Objective 10: To improve access to health services and health facilities for residents of Stoke Mandeville.	<p>In terms of ease in travelling to healthcare services and facilities, 55% reported it was 'Quite Easy' to get to an 'Optician', 53% 'Pharmacy', 53% 'Dentist' and 50% 'Doctor'.</p> <p>In terms of problems, 56% reported that it was 'Difficult' to book an appointment with their 'Doctor'.</p>
Objective 11: To ensure sufficient capacity for children living in Stoke Mandeville to access primary education within Stoke Mandeville.	<p>97% of respondents felt that there should always be adequate provision of School places within Stoke Mandeville to accommodate children living in the Parish.</p> <p>88% of those with children of Primary School age (4-11 years) had not experienced a difficulty in securing a place at Stoke Mandeville Primary School.</p>

Part 3: Analysis and Conclusions

44. The civil Parish consists of four distinctive neighbourhoods which are separated physically by roads and railway lines and in practical day to day terms by a lack of community-based facilities for medical services, education and access to fastest broadband services.
45. Accordingly, policies in the Neighbourhood Plan should address the following issues on behalf of current and future residents.
- a. The cohesion of the community as a whole should be addressed. The physical separation of the Parish neighbourhoods is exacerbated by a lack of facilities in common.
 - b. Every child living in the Parish should have access to appropriate education at least up to secondary level within the Parish. Currently, both Schools in the Parish are operating either almost at or beyond optimum capacity.
 - c. There should be some provision of medical facilities within the Parish to aid the stated aim of increased community-based care.
 - d. Whilst allotment facilities are adequate for current residents, allotment provision should be included in future developments.
 - e. Efforts should be made to ensure that fibre broadband provision is available in future residential development.

Annex 1 - Broadband Services

A - Packages available from major providers.³²

Provider	Package 1	Package 2	Package 3	Package 4
BT	U/L BB	U/L Infinity	U/L infinity 2	
	£23.99/month	£31.99 month	£39.99 month	
	u/t 17 mbs	u/t 52 mbs	u/t 76 mbs	
EE	U/L BB	U/L Fibre BB	U/L Fibre Plus	U/L Fibre Max
	£21.50 month	£29 month	£33 month	£45 /month
	u/t 17 mbs	u/t 38 mbs	u/t 76mbs	u/t 76 mbs
Sky	Broadband	Sky Fibre	Sky Fibre U/L	Sky Fibre Max
	£18 month	£20 month 25Gb limit	£25 month	£30 month
	17 mbs	u/t 38mbs	u/t 38 mbs	u/t 76 mbs
Virgin	Vivid 50	Vivid 100	Vivid 200	Vivid 300
	£29 month	£34 month	£39 month	£44 month
	u/t 50 mbs	u/t 100 mbs	u/t 200 mbs	u/t 300 mbs
Note: All suppliers include various offers and incentives in their varying packages. Some charge connection fees, others don't. U/L = unlimited u/t = up to				

The table above illustrates the various speeds offered by suppliers. All suppliers except Virgin are available throughout the Parish. Virgin supplies its services via cable and the village is not yet appropriately cabled. None the less, all parts of the Parish have superfast broadband available to them if subscribers choose to pay.

³² Prices and speeds quoted are taken from supplier websites on 28 November 2017

The following table illustrates actual average download speeds achieved over a number of tests (the number of tests varying from address to address) over time.

B - Average download speed test results - tested on 16 August, 2017 at 16:30.³³

Location	Provider	Typical download speed (Mbps)
Brudenell Drive, village	BT	41.59
Risborough Road, village	EE	27.74
Wendover Road, village	BT	30.61
Booker Park School, Stoke Leys	Sky	42.88
Anton Way, Hawkslade	Virgin	101.57
	Sky	2.09
Anton Way, Hawkslade	Virgin	20.71
Orwell Drive, Hawkslade	BT	38.46
	PlusNet	0.35
	Sky	28.1
Winterton Drive, Stoke Leys	Virgin	16.88
Winterton Drive, Stoke Leys	Virgin	35.13
Bowler Road, Stoke Grange	Orange Mobile	92.58
Elham Way, Stoke Grange	Virgin	14.24
	PlusNet	27.91
Diane Close, Stoke Grange	Sky	1.59
Portwill Way, Stoke Grange	BT	26.94

It is important to repeat that the above results depend on the experience of subscribers who have tested their connection speed which is in turn affected by access to super/ultra-fast broadband, type of connection, distance from the exchange, type of subscriber package, volume of traffic and other technical factors.

³³ Source of speed test data <http://labs.thinkbroadband.com/local/?postcode=HP22%205UR>

Annex 2 - Telephone network coverage and network mast locations^{34 35}

Location of mobile phone network masts in the Parish

Existing masts are located at the following sites in the Parish or just nearby (according to the map - locations not physically verified).

- a. Junction of Marroway and Wendover Road – Orange.
- b. Junction of Camborne Avenue and Wendover Road - Orange/T mobile.
- c. Within SM hospital grounds – Vodafone.
- d. Whiskin Lane (near Stadium Approach) – Vodafone.
- e. In grounds of Mandeville School - Orange.
- f. Across Stoke Brook from Oat Close - O2.
- g. Marsh Crossing - unidentified supplier.
- h. North Lee Lane towards Terrick - T mobile and O2 (two masts).
- i. Station Road nearly opposite Church Court – BT.

In addition, planning applications at the following sites are mapped with the comment "Please log in for Planning Application details" suggesting masts will be placed in the vicinity.

- a. Junction Camborne Avenue and Wendover Road.
- b. Within SM Hospital grounds.
- c. Ellen Road near Hannon Road junction and shopping precinct.
- d. Wendover Road near footpath from Patrick Way to main road (a little way before Eastcote Road junction - two masts).

³⁴ Source of information on coverage:

<http://www.which.co.uk/reviews/mobile-phone-providers/article/mobile-phone-coverage-map>

³⁵ Mast locations existing and proposed extracted from:

https://www.mastdata.com/37/37_map_mobile_mast.aspx?Table=15&AdTyID=43&ROName=hp22%205ur&Z=14

Annex 3 – Complete List of Public Consultation Responses

Village Consultation Event – May 2016

- The area Winterton Drive/Kynaston Avenue has no playing facilities. If the housing area is extended, please ensure suitable play facilities especially if BCC Sports and Social (much needed) is to go.
- GP Surgeries near Stoke Mandeville cannot cope as they have too many patients. Another Surgery near or in the Parish would improve the situation, especially if more houses have to be built.
- A little row of shops including a Pharmacy would help.
- Out village is let down with the state of our Church grounds and the large trees are dangerous with branches breaking off.
- Public toilets in/near the playground.
- New School places at William Harding serve near Hospital housing. An extension to SM village School would not accommodate the new housing planned so where would the kids further away in Winterton/Kynaston be schooled? Could BCC Sports and Social be made into a School? With open play facilities.
- Better care of Parish Church and its closed Churchyard (an eyesore) could raise pride in the village. A kitchen and lavatory annex should be added to the Church.
- Agree. Kitchen and toilet facilities in the Church. Money??
- Current Doctor's Surgeries cannot take current residents. New Surgery needed for new and existing housing in Parish.
- We need a Doctor's Surgery in the village. Current Doctors cannot server their current patients let alone take any new. Schools are also struggling, and more places needed if housing developments go ahead. Community facilities improved – local café or similar would give boost to community.
- Want an exploration/adventurer's club.
- Need more stuff for children. Missing more fun parks.
- Want acting/amateur dramatics. Protect sports fields. Protect Wendover Woods.

Village Fete 12 June 2016 - Responses

- Dentists.
- Doctor's Surgery.
- Sport must be at the centre of plans and buildings can celebrate Paralympic heritage.
- A new good Doctor's Surgery.
- I miss the old Community Centre where families could socialise together.
- New developments should require a timed, planned commitment on build of community facilities before building company starts selling plots. Buckingham Park Surgery is still in temporary building 5 years on.
- A small Primary School and Secondary School to serve new extended area.
- Doctors, Dentist. Local food outlet, e.g. Chippy, Chinese.
- Another pub.

Monday Club 27 Jun 2016 - Responses

- Need a Doctor's Surgery.
- Need a Pharmacy.
- Need a bigger School.

Survey April 2017 – Responses

Question 10c. If you answered 'difficult' please tell us why this is the case, and at what times of the day and night you experience greatest difficulties.

- In February 2016 we were offered a 7 week local Doctor's appointment and we are over 75 years of age – Bedgrove.
- Over subscription - any -Wendover Health Centre.
- Out of Stoke Mandeville limited parking – Whitehill.
- They can only offer appointments in 6-8 weeks' time - day and night – Bedgrove.
- Lack of appointments/normal opening hours - Wendover Health Centre.
- Do not know.
- Poplar Grove is a long way to walk when unwell. It can take 30 minutes to get though on the phone and up to 3 weeks to get an appointment.
- Not always able to get an appointment when one is required - daytime - Wendover Health Centre.
- Not enough Doctors.
- Own Doctor not available - anytime – Bedgrove.
- Surgery is too busy - all times - Wendover Surgery.
- Traffic problems and difficult to book appointment – 9am-5pm - Poplar Grove.
- Overstretched already - am - Westongrove Wendover.
- Takes two or three weeks for appointment - 9am to 5pm – Oakfield.
- Too long to wait for appointments – Wendover.
- Lack of bookable appointments – all - Bedgrove Surgery.
- No Drs Surgery in Stoke Mandeville and morning appointments before work are difficult to get with work – Bedgrove.
- Doctor you wish to see is not always available - Bedgrove Surgery.
- Trying to get an appointment to see the Doctor - Poplar Grove.
- Difficulty with times required for appointment. Call waiting times. Availability of consistent care in complex cases – day – Mandeville.
- Takes up to 3-6 weeks to get an appointment with doctor - never next day – anytime - Westongrove Wendover.
- Bus Service - Popular Grove Practice.
- Long wait for appointment. Have to drive to Surgery or get buses – day - Wendover Health Centre.
- Doctor never available. Always a nurse – Wendover.
- We don't know why on several occasions we have waited weeks for appointments - Weston Grove.
- Distance - my Surgery is across town - rush hours 9am and 5pm – Berryfields.
- In and out bad transport to Aylesbury.
- Takes two buses to get there - Wendover Health Centre.
- Sometimes have to wait 2 weeks – Bedgrove.
- Overpopulation and no Doctor in Stoke Mandeville – always – Wendover.
- Long distance to walk to get there - Whitehall Surgery Aylesbury.
- Road congestion 7-10am - Oakfield Road.
- Reliant on two buses to make an appointment. Taxi used sometimes - am and pm - Wendover Health Centre.

- Can speak to doctor on phone if needed. 2 week wait if want a non-emergency appointment - Mandeville Surgery.
- Can not see Doctor for emergency appointments - best a phone call later or appointment 2-3 weeks later, so Stoke Mandeville Hospital is the only help - Oakfield Surgery anytime.
- Making appointments are sometimes difficult - Wendover Health Centre.
- Long wait for appointments - Wendover Health Centre.
- Appointments at Doctor's are difficult as a result of increased numbers of people against static levels of resources - afternoon 1500-1800 - Wendover.
- Have to travel to other side of Aylesbury - all - Poplar Grove.
- Trying for appointments is hard, 2-3weeks not good if your ill, no home visits etc. - Day and Night - Wendover Health Centre.
- Always very busy, no appointments for days, sometimes 1 a week - Weston Grove Practice.
- Too many patients - not enough capacity - no new GP's being built despite more houses - Poplar Grove.
- Presumably too many patients per Doctor – Bedgrove.
- Delays/waiting times for appointments - all times of day.
- Too few Doctors – Bedgrove.
- 3-4 week waiting list for appointments - am - Westongrove Bedgrove.
- Shortage of Doctors.
- Can't get an appointment - 1/3 week wait on average - Poplar Grove.
- Surgery does not appear to offer anything but appointments on the day, rather than being able to book appointments in advance for non-urgent – day - Poplar Grove.
- Volume of patients - makes booking a simple review very difficult – Bedgrove.
- No direct public transport link for non-drivers – anytime - Poplar Grove.
- Difficult to obtain an appointment within 2 weeks, sometimes more - anytime - Mandeville Practice.
- Difficulty in getting through on the phone. Difficulty in getting a non-emergency - Poplar Grove.
- Have to go to Wendover – always – Wendover.
- I work in West London; if I'm unwell then I can't usually get an appointment without calling at 8am or going in person which needs a day off - Wendover Health Centre.
- No routine appointments available anymore - Whitehill Surgery.
- We need the car. Horrendous appointment system at Bedgrove.
- Bus service only every 2 hours – Wendover.
- Having to dial a number then press number hoping it will connect. Usual waiting time is $\frac{3}{4}$ of an hour, just to try and talk to a Doctor - 8am Hannon Road.
- Very high demand at all times - Mandeville Surgery.
- Not on a bus route - Westongrove Wendover.
- Extreme distance if car unavailable - Westongrove Wendover.
- Because of wheelchair - Aston Clinton and Wendover.
- Always busy have a job to get appointment.
- Getting your Doctor's appointment is approx. 3 weeks, unless you class yourself as an emergency - Bedgrove Surgery.
- Phone up for an appointment and they won't give you one even though the Doctor said to do this. They make it very awkward, don't take account of the fact that we work. Not flexible or accommodating, make you feel as if you are a nuisance - anytime during the Day - Mandeville Surgery.
- It can be hard to get through on the phone for an appointment – morning - Hannon Road.
- They have too many patients - Wendover Health Centre.
- Bedgrove Surgery is totally overloaded with patients. Getting appointments takes a long time if you wish to see specific GP. Waiting times are long - all the time – Bedgrove.

- Change of bus – day - Walton Court.
- Demand on Doctor's Time - am - Wendover Health Centre.
- No public transport close by surgery – anytime - Wendover Health Centre.
- It is hard at times to get an appointment at Mandeville Practice for adults. Found with children really easy. New phone system has helped, but I think this could be confusing for elderly - Mandeville Practice.
- 2 week delay in getting an appointment – anytime – Wendover.
- You can only book an appointment for the same day. If you call after 8.30am it's too late - 8am - Poplar Grove.
- Too many patients not enough Doctors – Mandeville.
- Lack of Doctors, unable to see your Doctor 2-4 weeks. Typical wait – anytime - Westongrove Practice.
- Getting a routine appointment – Whitehill.
- Availability of appointments – Bedgrove.
- In Wendover not Stoke – Wendover.
- Crossing Aylesbury – most - Poplar Grove.
- No appointments available ever. Have to attend emergency walk in centre to be seen – Bedgrove.
- Without transport, public transport is too infrequent, often have to wait over a week for an appointment – all - Wendover Health Centre.
- Too many people wanting to use - anytime of day.
- So booked up with appointments. 2 Surgeries combined the volume of patients 9am to 12am - Poplar Grove Surgery.
- Volume of patients - all times – Bedgrove.
- Transport or lack of. Also trying to get an early appointment - Westongrove Medical Centre.
- More users/Less resources – day - Bedgrove Surgery.
- 2 buses (into Aylesbury and out again) or taxi – Bedgrove.
- To ring for an appointment - Wendover Health Centre.
- Too many patients - all times - Wendover Health Centre.
- Getting Nurse appointment for routine vaccination, getting non-urgent appointment with preferred GP - out of School hours anytime - Wendover Health Centre.
- The Practice is too large need more Doctors – anytime - Wendover Health Centre.
- Too many people - Bedgrove Surgery.
- Too many patients for too few appointments -all times of day - Poplar Grove.
- Non-emergency appointments, take up to 6 weeks - Bedgrove Surgery.
- Recently have found the Health centre to be very unhelpful, bordering on useless.
- With growing community there is dire need of a Doctors Surgery within Stoke Mandeville village area to balance Mandeville and Bedgrove Surgeries load.
- Westongrove (Bedgrove) almost impossible to get an appointment even for a future date.
- Too many patients per Surgery.
- Too long a wait. Can't see own Doctor within 3 weeks of calling. Already too many patients.
- The Bedgrove Doctors have very limited booking availability often requiring a call first thing in the morning. Instead of displaying the cost of missed appointments they could focus on how many patients are seen late or time taken to get appointments.
- Traffic - although short distance, parking.
- Lack of appointments – day - Poplar Grove.
- Always at least a 2 week wait to see my Doctor.
- We're registered at Meadowcroft Surgery so travelling across town for appointments can be a real issue.
- Oversubscribed.

- Bedgrove Surgery - can never see the same Doctor twice.
- Registered with a Doctor across town. Traffic always bad. Have been late getting there due to road works and traffic problems in Aylesbury. Difficult to get an appointment in the first place.
- My Surgery is in Wendover. The Surgery in Bedgrove would have been easier to get to, but they say my postcode means I have to go to the one in Wendover. Non-emergency appointments can be several days away.
- Early morning appointments are difficult due to volume of traffic. Doctor's is on other side of town from home, town centre is usually very congested.
- Lead appointment time over 4 weeks, emergency appointments fill up within minutes - all day – Bedgrove.
- Getting an appointment is taking approximately 14 days for a specific Doctor.
- Bedgrove surgery impossible to get a non-emergency appointment with 1 month
- Over booked.
- Unable to book in advance an appointment with GP for 2/3 weeks' time due to volume of patients.
- Mandeville Surgery Hanover Road Walton Court.
- Not enough Doctors in parish.
- Mandeville Surgery no appointments available.
- Westongrove Surgery Bedgrove. Large numbers of people needing appointments at same time.
- Anytime, any day, getting an appointment is difficult period. Calls not answered and lack of available appointments - Bedgrove Health Centre.
- Traffic delays.
- I don't have difficulty as such getting to the Doctor, it is just very inconvenient not having a Surgery in the village. It's is always difficult to get an appointment with the Doctor.
- A four week wait for an appointment re a meds review - Bedgrove Surgery.
- Main problem is getting out of our drive! We've missed Doctor's appointments at Bedgrove due to the constant traffic in Stoke Mandeville and no cars letting us out when we need to turn right out of our drive. Very depressing!
- Wendover Health Centre.
- No answering phone.
- Oversubscribed and lack of staff.
- Average wait for a standard appointment at Bedgrove Surgery is almost a month.
- Bedgrove Surgery. It's very difficult to get an appointment with my own Doctor sooner than 2 weeks.
- Bedgrove Health Centre - unbelievably difficult to get an appointment.
- To many patients per Doctor allocated
- Travel to the other side of Aylesbury to go to a good Doctor - Poplar Grove.
- Bedgrove Surgery, an appointment with a Doctor is difficult owing to the amount of people using the surgery.
- They are too busy.
- We have to travel by car as there is no Doctor's surgery in Stoke Mandeville.
- Too many patients since merging 2 practices together. 8am - 1pm - Poplar Grove Practice.
- I can access all of these easily as I have a car. None of these facilities are available in Stoke Mandeville and should be added if planning goes ahead.
- Always extremely busy & is on the other side of Aylesbury.
- Traffic and parking at Wendover Health Centre.
- Traffic – morning & late afternoon - Polar Grove.
- Too many patients – am - Poplar Grove.
- Parking at Medical Centre in Wendover.
- Mandeville Practise, appointments system in disarray, seems lack of Doctors is the problem.

- Mandeville Surgery - long wait for blood test and routine Doctor's appointments. Fine for urgent appointments.
- Whitehill & Fairford Leys. Now only possible to make an appointment for a 5min telephone conversation with a GP.
- Meadowcroft - late pm.
- It would be ideal if the earliest and latest appointments of the day were reserved for people who have full time jobs.
- Wendover Health Centre is very busy.
- Bedgrove Surgery. Increased population in the area means increased waiting times.
- Overloaded. Soonest available appointment is often 4-5 weeks away even if you are totally flexible about time or day. It has been like this for 4 or 5 years now. Poplar Grove Practice.
- Mandeville Practice.
- Difficult to answer as the Mandeville Surgery Hannon road have recently changed the booking facility, have found it easy and difficult to get a booking, they are overloaded. I cannot book online.
- Doctor is Poplar Grove, difficult to travel to when feeling unwell.
- Difficult to get an appointment to see own Doctor at Poplar Grove Surgery.
- Whitehill Surgery - difficult to get appointments in a reasonable time.
- Too busy, shortage of appointments – staff.
- GP not available for appointments.
- Poor public transport connections to Poplar Grove.
- Mandeville Surgery, few to no appointments available.
- Doctors never available except at 4 weekly notice.
- Lack of available appointments - Bedgrove Surgery.
- Length of time for a 'standard' (non-emergency) Doctors appointment is considerable.
- Book in advance appointments.
- Mandeville Surgery - always have at least 2 week wait for more routine appointments. Emergency appointments are also difficult to obtain especially when trying to fit them around work. Generally there doesn't seem to be enough GPs to staff the Surgery at the right level.
- Traffic getting across town is so variable I have often missed appointments.
- Have to wait weeks to see the Doctor unless leg is currently dropping off.
- Difficulty getting an appointment at short notice - Mandeville Surgery.
- Too many people, no more houses.
- 4 to 6 weeks to get an appointment with own Doctor - during the day - Bedgrove Surgery.
- Across town journey.
- Overburdened service.
- Wendover busy.
- Bedgrove already serves a large community.
- Difficult but not impossible to arrange an appointment within 24 hours at Bedgrove.
- GP is in Bedgrove and appointments are usually available as "emergency" appointments but when it is not an immediate need, but you just want to see a GP within a few days, is nigh on impossible.
- Westongrove Surgery full up and overflowing.

Dentist

- Out of Aylesbury - Aston Clinton.
- They cannot offer services outside of the usual 9-5hrs – Malthouse Dental Centre.
- Lack of appointments - normal Opening Hours - Aston Clinton Dental Centre.
- Traffic problems - 9-5 - Watermead Dental Practice.
- No Dentist in Stoke Mandeville - High Wycombe.
- Waiting times for service for non-urgent treatment - Out of School Hours - Fairford Leys.
- No local Dentist available. Have to travel out of area – day – Langley.
- Limited opening times – weekend – Aspire.
- Reliant on two buses to make an appointment. Taxi used sometimes.
- No NHS spaces are available – Tring.
- Finding an NHS Dentist when new to the area - none at present.
- None local. Always booked months in advance.
- Traffic problems - peak times – town.
- Use one in centre of town. Parking/travelling there difficult, especially when travelling in School times – Eastgate Cambridge Street.
- No direct public transport links for non-drivers anytime - Fairford Leys.
- Have to go to Aylesbury – always.
- We go to Amersham.
- Bus service only every 2 hours – Wendover.
- NHS Dentist always full.
- Not on a bus route – Tring.
- Extreme distance if car unavailable - Eastgate Centre.
- Change of bus – day - Fairford Leys.
- Busy for appointments. Have to allow time to get across ok to meet appointment times - anytime of day - Dentist Fairford Leys.
- Traffic 9am-10am and 3.30pm to 6pm - Eastgate Fairford Leys.
- Wendover.
- Only Dentist hard to access. Without transport, public transport is too infrequent.
- Too many people wanting to use - anytime of day.
- Bus, walk, taxi - Oasis, Buckingham Road Aylesbury.
- Routine Treatments - several weeks wait (Emergency is no problem) – anytime - Perry House Surgery Wendover.
- If there was a local Stoke Mandeville Dental Practice we would use it, we currently travel to High Wycombe.
- Book next appointment for 6 months ahead when at current appointment.
- Too many patients.
- Aylesbury is becoming traffic locked.
- Have to drive through Walton Court which is very busy in rush hour. Dentist popular in Fairford Leys, so not always easy to get an appointment.
- Private Dentist in Wendover, no problem. NHS Dentist more difficult.
- Traffic delays.
- We go to Fairford Leys so no problem.
- Tring Dental Surgery.
- No NHS rates.
- Similar.
- As above, hardly any NHS Dentists available.
- Have to go into town - Bourbon Street.
- We have to travel by car or bus as there is no Dentist in Stoke Mandeville.

- Roads busy and difficulty in parking in Aylesbury town centre. 8.30am -5pm - Cambridge Street Practice.
- I have to go into Aylesbury town centre for this as no NHS Dentists in Stoke Mandeville.
- Traffic - morning Aston Clinton.
- Parking - 24 hours.
- Could not find NHS dentist in Aylesbury.
- Could not even register at an NHS in Aylesbury, had to register in Tring Dolphin Square.
- Dentist fully booked for after School appointments for the next 6 months.
- Lack of Dentists in area.
- No more roads. No more traffic.
- Not enough Dentists.
- My Dentist is located in Bovingdon because when I moved to Stoke Mandeville 20 years ago this was the nearest NHS Dentist available. The distance makes it difficult to visit.
- I use a Dentist on the Tring Road.
- Traffic to access the only NHS Dentist across town.
- Dentist is in Fairford Leys and appointments are not usually a problem.
- So expensive.

Pharmacy

- Tring Road Tesco.
- Not aware of a Pharmacy in Stoke Mandeville - Bedgrove and Walton Court.
- Bus Service.
- Have to travel to Bedgrove (nearest) day.
- Limited opening times – weekend – Bedgrove.
- Reliant on two buses to make an appointment. Taxi used sometimes.
- Have to travel to other side of Aylesbury – Rowlands.
- Town.
- Have to go to Wendover – always - Lloyds Wendover.
- Lack of transport - Lloyds Bedgrove.
- We go to Bedgrove.
- Bus service only every 2 hours - Lloyds High St Aylesbury.
- Not on a bus route - Westongrove Wendover.
- Extreme distance if car unavailable - Lloyds Bedgrove.
- Day.
- Too far away to walk I need transport – Bedgrove.
- Traffic to either go up of down Wendover Road. Have to use car - anytime of day - or Wendover Pharmacy.
- Traffic/Parking 9 to 10am and 3.30pm to 6.00pm Fairford Leys Aylesbury Town Centre.
- Lloyds – Wendover.
- 2 bus journeys to Hampden Gardens - pharmacy now delivers to home.
- Only Pharmacy hard to access. Without transport, public transport is too infrequent.
- Not correctly located.
- 2 buses (into Aylesbury and out again) or taxi - Bedgrove Lloyds Bedgrove or High Street, Aylesbury.
- Traffic - although short distance, parking.
- OK.
- N/A - use the one near work.

- Access no problem - but always incredibly busy!
- Have to go to Tesco Tring Road.
- N/A.
- We have to travel by car to Bedgrove or by bus to Aylesbury as no Pharmacy in SM.
- It is on the other side of town but a good Pharmacy.
- Traffic – morning - Poplar Grove.
- Always very busy.
- No more people.
- Have to go into Aylesbury.
- Traffic to access any Pharmacy, none near us open late, have to go to Bedgrove.
- Pharmacy usually used is in Bedgrove - never had an appointment.

Optician

- Specsavers Aylesbury.
- Not aware of an Optician in Stoke Mandeville - Aylesbury Town Centre.
- Have to travel as none locally - day - Little Chalfont - all historic data at this location.
- Having to travel into town and find parking. Most times - Boots.
- Reliant on two buses to make an appointment. Taxi used sometimes.
- Don't know of any in local community.
- Town.
- Have to go to Aylesbury – always – Boots.
- We go to Aylesbury.
- Bus service only every 2 hours - Specsavers Aylesbury.
- Not on a bus route – Tring.
- Extreme distance if car unavailable.
- Day.
- Too far away to walk, need transport.
- Traffic to go to appointment and parking (limited spaces and cost) - anytime of day - Princes Risborough or Boots in Aylesbury.
- Traffic/Parking 9.10 3.30-6.00 Fairford Leys, Aylesbury Town Centre.
- Boots Aylesbury.
- In a town centre not conveniently located.
- Walk - train and walk – Ivan Cammack Wendover.
- Difficult if you want a specific Optometrist. Involves wait of a couple of weeks – anytime - Ivan Cammack Wendover.
- Inefficient work methods at Specsavers causing chaos.
- Aylesbury is becoming traffic locked.
- Boots in Aylesbury - OK.
- N/A - use the one near work.
- Have to go into town.
- As Dentist, no facility in SM.
- Roads busy and difficulty in parking in Aylesbury town centre 8.30am - 5pm. Specsavers.
- In town and always quite busy.
- Parking - 24 hours - Specsavers High Street.
- God Damned HS2.
- Have to go in to Aylesbury.
- In town, travel not easy in traffic and parking getting harder.
- Optician is in Aylesbury and appointments are not usually a problem.

Question 11a. Regardless of whether or not you have children of Primary School age (4-11 yrs), do you think it is important that there should always be adequate provision of School places within Stoke Mandeville to accommodate children living here?

- Sense of community. Ease of access for families.
- Education is important and children should be able to go to School near home. Is important for social skills also.
- Only for catchment area children.
- Need to reduce travel and ensure a community feel.
- It is important for a community feel and for children to walk to School.
- All new build developers should be made to build Schools/services to absorb their dirty work and not strangle existing choked facilities.
- My Children are grown up and away so have no idea what the problems are. Parents seem to have a choice these days and usually get what Schools they choose.
- Children should have the opportunity to go to the same School as other local children.
- Need more School places if more housing keeps being built?
- To cut down on driving and pollution in the area.
- It is a community developing matter (e.g. socialising) for both child and parent to use a local School.
- Community and continued renewal.
- Children should be walked to/from School.
- If they live in the village.
- Very important so children can walk to School and have their own local School.
- Why would we not want this?
- All children within the village should have the opportunity to be schooled in it.
- It is vital that young children should not have to travel long distances - the same applied to pre-School children.
- To create the local community.
- Off course our children are our future.
- Local children should be able to get into the nearest School.
- A good School with lots of quality teachers and facilities.
- I think it is good to be able to walk to School so local School places are important.
- Primary children should be able to walk to School.
- Children should be in local Schools with friends in their neighbourhood.
- Strongly agree.
- How many out of Stoke Mandeville intake.
- Very, very important for children living within catchment, both for School and children to socialise with their friends out of School.
- There should always be easy access for Schools.
- To enhance and maintain social structure of Stoke Mandeville.
- Excessive travel for primary age children should be avoided.
- Our son attended Pollyanna Pre School and Stoke Mandeville Combined School from age 3 to 11. Vital part of his being part of the Community and Village Sense.
- Too much School traffic as it is.
- With housing expansion plans proposed, will need more Schools and quickly.
- Too many issues with children attending Schools out of catchment.
- More housing = more children = more traffic.
- The village School is a key community facility and must be protected at all costs.
- But there is already. My wife works at Stoke Mandeville School. It works. Leave it alone. The School, Doctors, roads, trains - everything cannot cope with more.

- The village School is already full we moved here in 1998 and had to go to tribunal to have our child awarded a place at the village School. We live within 3 minutes' walk of the School.
- And there is not the capacity. The School is already full and there is no possibility of building expansion.
- Infants and Primary only.
- Transporting children of this age is not good policy. Parents quite reasonably do not like to send by bus/coach/school transport but every parent taking a child to School by car adds to traffic problems.
- It is very important that local children do not have to travel far to attend their local School.
- The Schools are already at maximum capacity. The planned developments will over subscribe the Schools further and reduce effectiveness.
- A village School is heart of the community and to be able to walk to School is very important.
- This should a given. If you live in the area your School should accommodate you.
- My child is due to start School in September we are in catchment but I'm extremely worried that she will not get a place at Stoke Mandeville School.
- If they live locally there would be less traffic and chaos.
- Control by not building more houses.
- The School is the heart of any village! Local children should have priority.
- It is good to be able to walk to a local School instead of having to drive.
- Absolutely, to build a sense of local community and also to reduce commuting to Schools elsewhere.
- We should expect to have to go further for education.
- The further afield parents have to go to take their children to School, the more crowded the roads become.
- Too many Schools in the area, too much traffic, too much noise.
- All children of Primary School age should go to their nearest Primary School.
- Stoke Mandeville Combined School is not going to be able to cope with the influx of children from 30 new houses let alone a further several hundred.
- The first Schools are an ideal way for children to meet new and make friends. It is also a brilliant place to build relations with adults in the community.
- It's a pity the School is so terrible now, shame on the education authority and headmistress.
- Important for locals to attend their local School within walking distance would be ideal.
- Young children need to be able to WALK to School ideally as that time is important as gearing up to. Or winding down from, the School day.
- Should be added to before the children arrive not as a panic measure afterwards.

Question 11c. If you answered 'yes' to the above, please tell us what the problem has been

- Over-subscribed.
- Had to appeal one child - won. 2nd child had a taxi provided by county for 3 years, took two appeals to get her a place. This was after moving to the village, one in year 3, and one in year 1.
- The School needs to be rebuilt in a location where it can cope with Stoke Mandeville children if it is just educating Stoke Mandeville children.
- No place at SM School, so had to go to Bedgrove infant.
- Oldest child aged 4 - yet to have School place confirmed so can't say for sure.
- Will find out on the 18th April.
- When we moved into the parish, we couldn't get our two girls into the School. (5 years ago).
- We chose to use an out of area School.
- We moved into the area and there was not room for the children so they have had to go to another School. One is still in School in Hemel Hempstead, as the School that two were allocated did not have room for him.
- Both children are older now and there were not as many people in the village over-subscribed.

Annex 4 - Confirmation of Allotment Data

Email received from Parish Support at Stoke Mandeville Parish Council.

From: Parishsupport@sm-pc.org.uk [mailto:Parishsupport@sm-pc.org.uk]

Sent: 31 October 2019 09:02

To: David Starr

Subject: Re: Allotments in the Neighbourhood Plan

Morning David!

Never apologise for contacting me :)

These are lovely questions to answer!

1. We have:- 35 1/2 plots available, which we have split between 29 half plots and 21 full plots.
2. Current annual rent is: - £30 for a full plot, and £15 for a half plot
3. All of our allotments are taken! 100%

Kind regards as always

A.M.

Annex 5 – GP Practices Local to Stoke Mandeville Parish³⁶

Name of Practice	Address and distance	Number of GPs	Registered patients	Patients per GP /Comments
Westongrove Partnership 3 Practices in this Group Listed below	See Each Practice		29482 - Total Over all 3 Sites	https://westongrove.com/ 1,281
Westongrove Partnership Aston Clinton Surgery	136 London Road, Aston Clinton, Aylesbury, Bucks. HP22 5LB 3.5 miles away	5	4/2018	Information is collective
Westongrove Partnership Bedgrove Surgery	Brentwood Way, Aylesbury, Bucks. HP21 7TL 1.5 miles away	9		Quote below taken from the Care Quality Commission Report 11 June 2018
Westongrove Partnership Wendover Health Centre	Aylesbury Road, Wendover, Aylesbury, Bucks. HP22 6LD 2.5 miles away	9	7/2019	"The Practice had recognised existing and potential future challenges, including significant housing developments in the local area. The Practice was active and worked collaboratively with the local GP Federation".
The Mandeville Practice	Hannon Road, Aylesbury, Buckinghamshire. HP21 8TR 1.7 miles away	4	15,336 10/2019	3,834
Oakfield Surgery	Oakfield Road , Aylesbury, Buckinghamshire, HP20 1LJ 2.2 miles away	3	5,679 11/2019	1,893
Poplar Grove	Meadow Way, Aylesbury, Bucks. HP20 1XB 2.5 miles away	16	20,492 08/2015	1,280
Whitehill Surgery	Oxford Road, Aylesbury, Buckinghamshire, HP19 8EN 2.6 miles away	5	14,480 9/2014	2,896

³⁶ Information and update dates from <https://www.nhs.uk/service-search/GP/Stoke-Mandeville/Results/4/-0.792/51.786/4/20286?distance=25&ResultsOnPageValue=10&isNational=0&totalItems=861¤tPage=1>

Meadowcroft Surgery	Jackson Road , Aylesbury, Buckinghamshire, HP19 9EX 3.6 miles away	9	15,666 11/2017	1,740
Berryfields Medical Centre	Colonel Grantham Avenue, Buckingham Park , Aylesbury, Buckinghamshire, HP19 9AP 3.7 miles away	6	9,679 11/2016	1,613

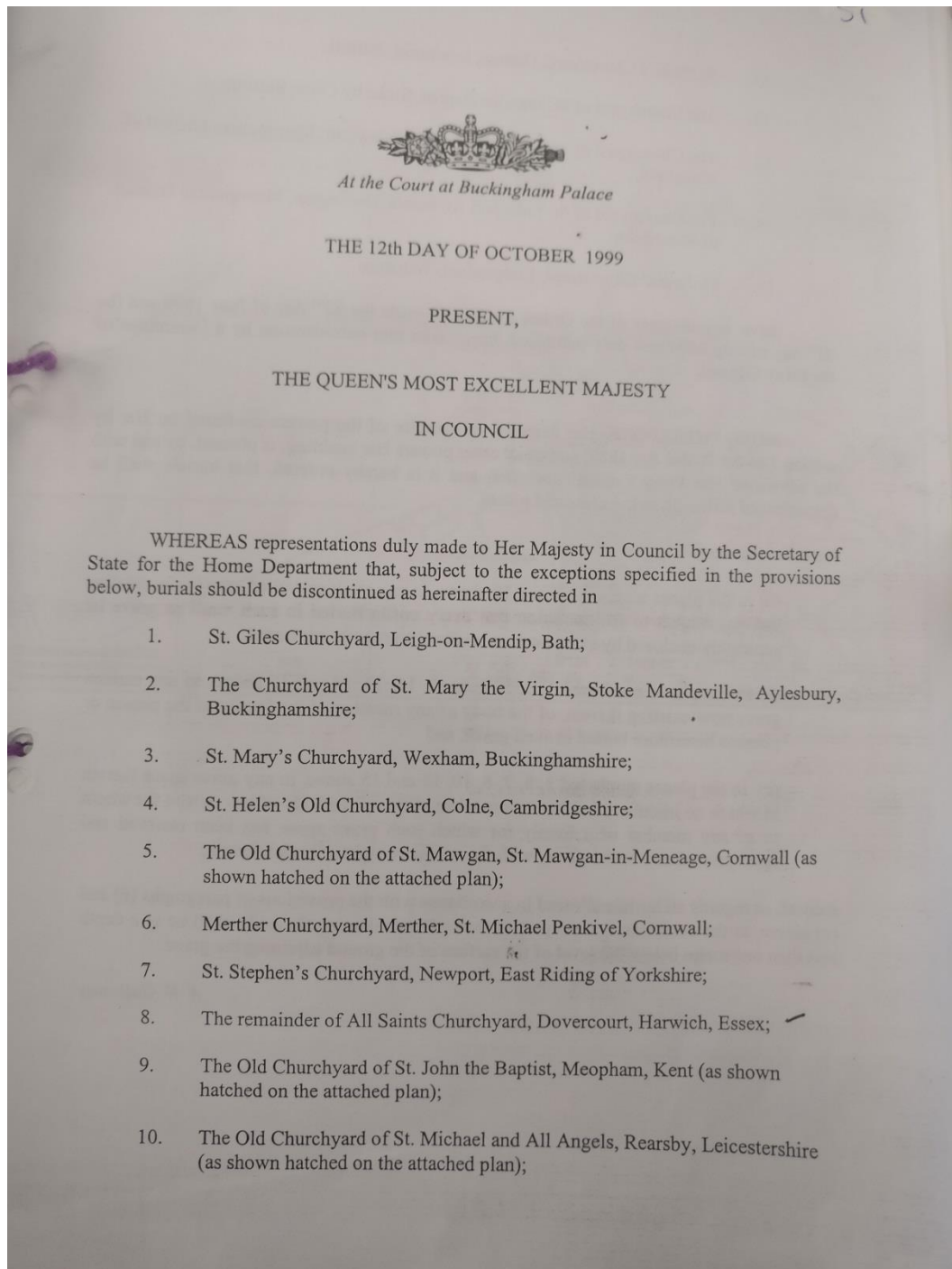
The websites of all practices currently (December 2019) state that all practices are accepting new patients.

The ratios of patients per GP listed above can be compared to the national average ratio of 1,729 patients per GP. This is calculated on the basis of total patients registered with a GP at 1/12/2019, 60,287,576³⁷, and the latest summary figure of registered GPs at 30/9/2019, 34,863³⁸ Full Time Equivalent GPs.

³⁷ <https://digital.nhs.uk/data-and-information/publications/statistical/patients-registered-at-a-gp-practice/december-2019>

³⁸ <https://digital.nhs.uk/data-and-information/publications/statistical/general-and-personal-medical-services/final-30-september-2019>

Annex 6 - St Mary's Churchyard Closure Order



Annex 7 - DCLG Approval for Disposal of Allotment Land



Department for Communities and Local Government

Ms Sarah Copley
Clerk to the Council
Stoke Mandeville Parish Council

Please ask for: Mrs Tara Dickenson
Tel: 0303 44 48044
Email: Tara.dickenson@communities.gsi.gov.uk

Your ref:

Our ref: NPCU/ALLOT/J0405/77050

By e-mail: smparishcouncil@btconnect.com

Date: 11 November 2016

Dear Ms Copley

Allotments Act 1925 Section 8

Location: Land off Marsh Lane, Stoke Mandeville, Aylesbury Vale, Buckinghamshire.

1. I am directed by the Secretary of State for Communities and Local Government to refer to your letter of September 2016 and to subsequent correspondence regarding the Council's proposal for consent for disposal of 1.46 hectares of allotment land which is part of the Stoke Mandeville Allotment, off Marsh Lane, Stoke Mandeville, Aylesbury Vale, Buckinghamshire.

2. As you are aware the Government is committed to ensuring adequate protection is afforded to allotments. The Secretary of State's consent for disposal will only be given if he is content that Section 8 (the statutory criteria) of the Allotments Act 1925 is satisfied:

"consent may be given unconditionally or subject to such conditions as the Minister thinks fit, but shall not be given unless the Minister is satisfied that adequate provision will be made for allotment holders displaced by the action of the local authority or that such provision is unnecessary or not reasonably practicable".

3. The Secretary of State's guidance, published 30 January 2014, sets out the assessment criteria against which applications for consent to dispose of statutory

National Planning Casework Unit
Department for Communities and Local Government
5 St Philips Place
Colmore Row
Birmingham B3 2PW

Tel: 0303 44 48050
npcu@communities.gsi.gov.uk

allotments are to be determined. These criteria are intended to provide a safeguard against the erosion of allotment sites through pressure on local authorities to provide land for other purposes.

4. The Secretary of State's consent will normally only be given if he is satisfied the following policy criteria have been met:

- i). The allotment in question is not necessary and is surplus to requirements;
- ii). The number of people on the waiting list has been effectively taken into account;
- iii). The council has actively promoted and publicised the availability of sites and has consulted the National Allotment Society;
- iv). The implications of disposal for other relevant policies, in particular local plan policies, have been taken into account.

Considerations

5. In relation to Section 8 of the Allotments Act 1925, the Secretary of State considers that the statutory criteria have been satisfied as there are no displaced plot holders and current holders on the remaining working section of the site (not for disposal) are engaged and in support of the plan for disposal and re development.

6. In relation to the policy criteria, the Secretary of State considers that criterion i), has been met. From the evidence provided, since its purchase in 1926, the disposal land has never been cultivated nor used for allotments due to insufficient demand. The current cultivated section of the site currently meets local needs with regular vacancies occurring. It is therefore considered that the site proposed for disposal can be considered as surplus to requirements.

7. In relation to criterion ii), the Secretary of State considers that this criterion has been met as there is no waiting list for the site which has regular vacancies, 3 at the time of writing.

8. In relation to criterion iii), the Secretary of State considers that this criterion has been met. Available plots are regularly advertised either on the council's website, through the distribution of leaflets, displaying of posters and through the Parish Council magazine.

9. In relation to criterion iv), the Secretary of State considers that this criterion has been met. There are no implications of disposal on any relevant policies, and in particular on the local development plan for the area.

10. The Secretary of State makes decisions with consideration of the relevant policy, unless there are exceptional reasons to justify departure from that policy. In this instance, the statutory criteria have been met and policy criterion has been met.

11. Therefore in pursuance of his powers under section 8 of the Allotments Act 1925, the Secretary of State gives consent for the disposal of 1.46 hectares of allotment

land at Stoke Mandeville Allotment, off Marsh Lane, Stoke Mandeville, Aylesbury
Vale, Buckinghamshire.

Yours sincerely



Mr John Oakes
Senior Planning Casework Manager

Annex 8 - Age Distribution of Population of Stoke Mandeville Parish (Census 2011)

Age Distribution (E 2018)³⁹	
0-9 years	626
10-19 years	563
20-29 years	597
30-39 years	734
40-49 years	810
50-59 years	931
60-69 years	749
70-79 years	413
80+ years	211
Total	5,634

³⁹

https://www.citypopulation.de/en/uk/southeastengland/admin/aylesbury_vale/E04001534_stoke_mandeville/